

---

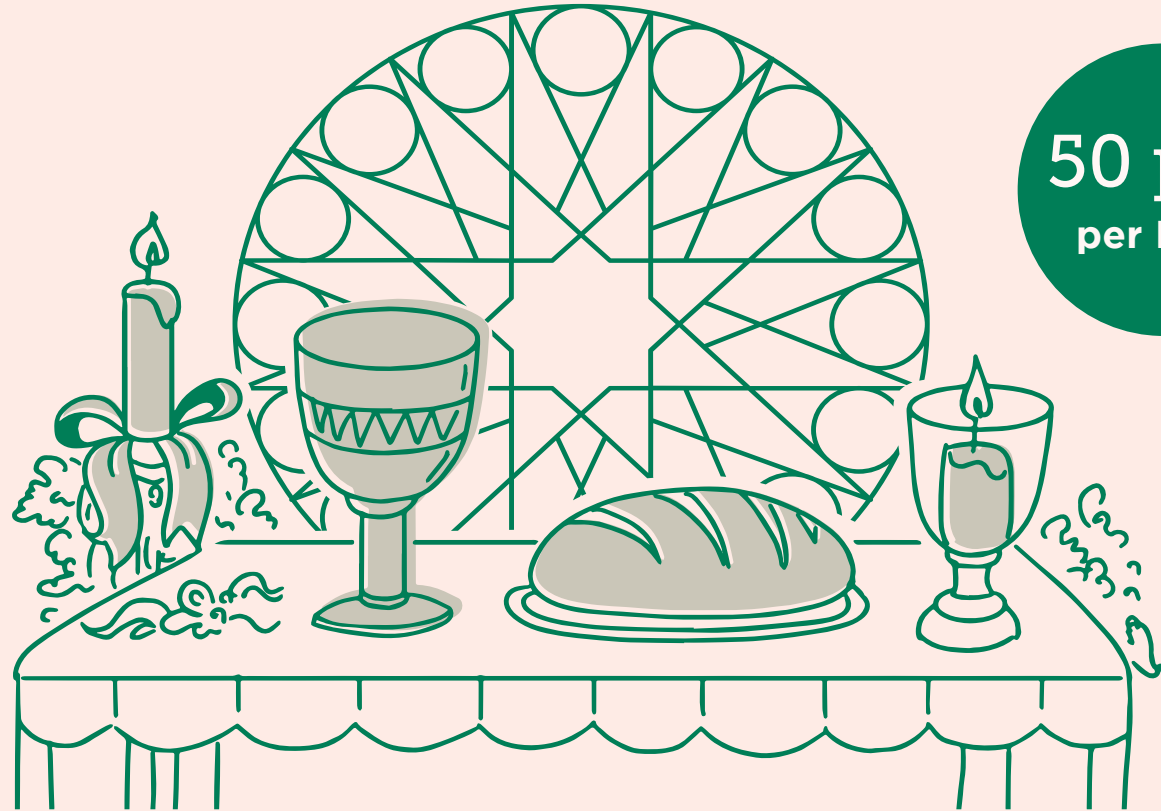
CHURCH OF THE HOLY FAMILY

---

# Masses Will Be Resuming

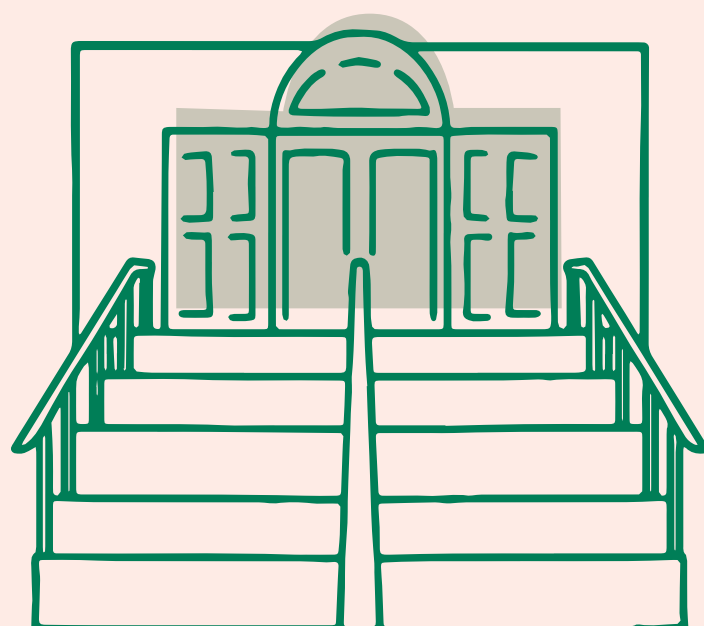
*from 11 July!*

**WHAT YOU NEED  
TO KNOW**



**50 pax**  
per Mass

# How to register



## Get logged-in



Scan QR code or visit  
[myCatholic.sg/register](https://myCatholic.sg/register)

**Choose “Holy Family”**  
as your selected parish. You can only attend one Church during this period.

## Book a Mass slot



Scan QR code or visit  
[myCatholic.sg](https://myCatholic.sg)

**Under “Mass booking”**  
Select your Mass slot.

Each person can attend one Mass per month.

## MASS SCHEDULE

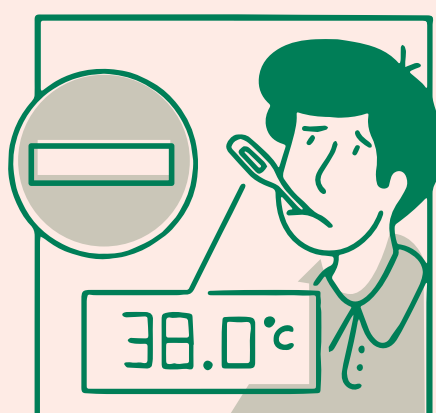
<b>Weekdays</b>	<b>7.00PM</b>	
<b>Saturdays</b>	<b>4.00PM</b>	<b>5.30PM</b>
	<b>8.00PM (Mandarin)</b>	
<b>Sundays</b>	<b>8.00AM</b>	<b>9.30AM</b>
	<b>11.00AM</b>	
	<b>4.00PM</b>	<b>5.30PM</b>
<b>Public Holidays</b>	<b>8.30AM</b>	

**Check-in up to 30min before each Mass.**

**Note:**  
Prior registration is compulsory for everyone (including children).

# When you arrive in Church for your Mass slot

## At the door



You cannot enter if your temperature is 38°C and above\*.



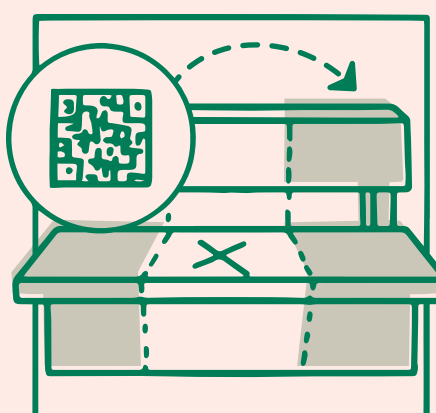
1. Check-in using SafeEntry.



Hand sanitisers will be available for use.

2. Scan your IC/BC/workpass to enter for your Mass slot.

## When in Church



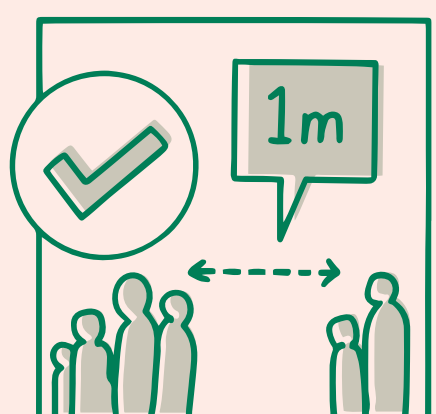
Pew check-in: Scan the QR code and indicate the relevant pew location.



Wear your mask at all times.



Keep to 5 people per group and do not mingle with other groups.



Keep a 1m distance from other groups and stay in your designated seats.



Please donate via donation boxes or through PayNow.

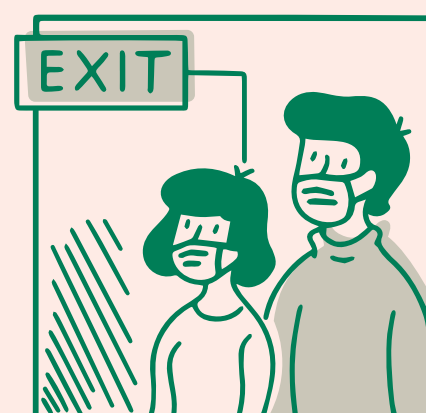


During Communion, follow the instructions of our volunteers.

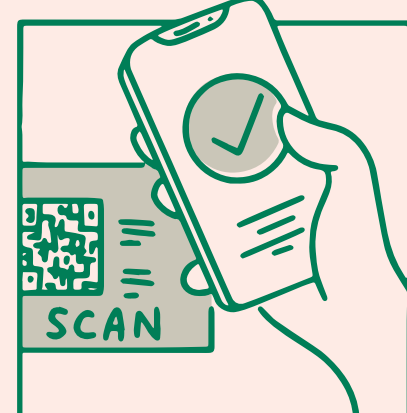
## After Mass



The grotto, adoration room and columbarium will remain closed.



Please leave the Church premises promptly after your Mass slot.



Remember to check-out using SafeEntry.

\*In accordance with MCCY guidelines. Safe Measures may change as the Covid-19 situation evolves.